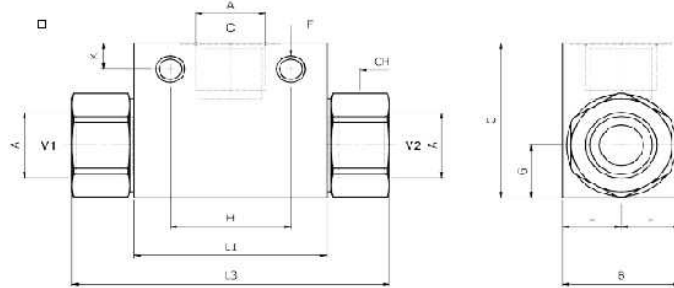


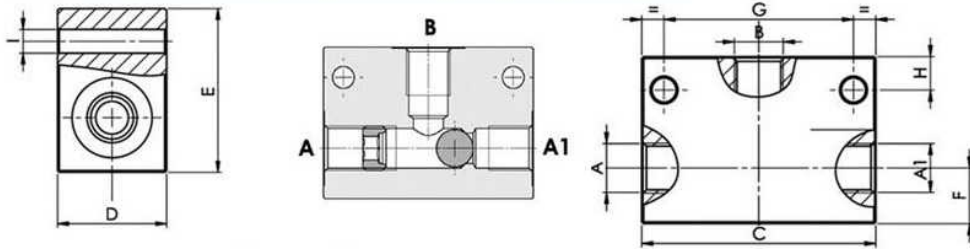
## Shuttle valve

VT005004



A	B	C	F	G	H	K	L1	L3	CH
1/4 BSP	25	35	6,5	12,5	25	7,5	36	69	22

VT005006



**Materials:** -body and internal parts are steel made.  
-external surface zinc plated.

**R1:** A, A1, B

Part n°	R1	Max. flow (l/min)	Max. Press. (bar)	C	D	E	F	G	H	I
VT005004	1/4" BSP	35	500		-	-	-		-	-
VT005006	3/8" BSP	50	350	63	30	45	15	51	9	6,5